

### New Chairperson

Te Awahohonu Forest Trust are pleased to announce the election of Serena O'Donnell as Chairperson of the Trust following Robert Cottrell's retirement. Robert is also stepping down from his Trustee position this October.

### Annual General Meeting

28 October 2023

9.30am

Napier War Memorial  
Centre

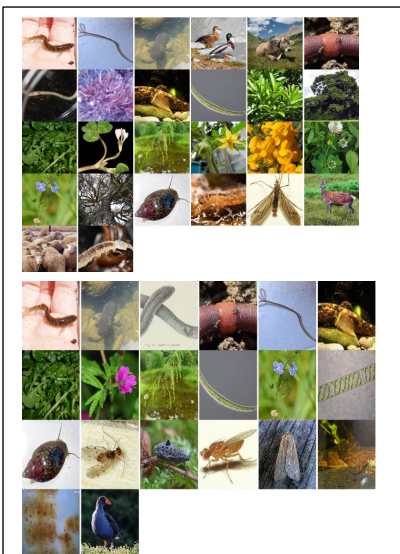
### Education Grants

The next intake of education grants opened in September 2023. For additional information or an application form please refer to the website.

<https://www.teawahohonu.co.nz/education-grant.html>

The owner dividend for 2023 is due to be paid on the 1<sup>st</sup> December. The Trust needs IRD numbers for each owner, if you haven't already supplied this please do. Thanks  
Please email  
[admin@teawahohonu.co.nz](mailto:admin@teawahohonu.co.nz)

# Te Awahohonu Forest Trust Newsletter – Spring 2023



### Te Taiao

The Toropapa Pa site project has progressed well and parts of this area are now cleared exposing some of the trenches, pits and other ancient formations. Parts of the site was also planted as a Rongoa garden in August.

The whio protection programme in the Toropapa continues to trap predators in that area. We lost 10% of the traps in the cyclone.

The Trusts has secured MPI funding to carry out a LIDAR survey on the before and after the cyclone situation in the forest. This will allow the Trust to plan better to minimise future events.

Water sampling continues on the streams in the forest and farms, and EDNZ samples have also been taken which show good biodiversity in our waterways (see pictures to the left).

A Taiao enhancement plan has been developed which will see an annual riparian planting program on the farms, and retirement of land into natives in the forest. It will be a site to behold in 50 years!



---

## Te Purotu (Geddes Block) Tree harvest & new pine plantings

The Trust harvested some pine trees off the Te Purotu (Geddes Block) in early 2023, however this was disrupted by the Cyclone. The balance will be harvested this summer. 80 hectares of new radiata has been planted on some of the steeper parts of the block, also 6ha of manuka.

## Cyclone Recovery

The Trust continues to repair the damage caused to the forest and farms by Cyclone Gabrielle. The forest has been extremely wet and some repairs have had to be delayed until spring or summer. The Trust is applying for funding to assist with costs.

See the photos on this page of the silt and debris build up in the gullies on the kiwi block.

---

## Sports Grants

Apply now for your summer sports grant. More info available on the website

<https://www.teawahohonu.co.nz/sports-grant.html>

---



---

Feedback or suggestions, new contact details?  
Submit on our website

<https://www.teawahohonu.co.nz/contact.html>

---